

MB-FLD

This economical multi-watt LED front light is designed for flooding large areas and mimics the diffused output of a screw base PAR38 halogen flood light. Working distances can vary from 6 to 18 feet or more depending on the amount of light needed. This flood light is extremely bright and emits white light at 600,000 Lux. Features include a unitized alloy body thermally potted for longevity.



FEATURES

- High power flood light
- Rugged design
- LED thermal management for stable performance
- Strobe and dimming options available
- Flicker free performance and instant start up with Metaphase analog driver technology
- Ideal for motion/sports analysis and other large area illumination applications
- Optional Constant Current Driver with 0 – 10VDC intensity control, compatible with DDC-3 and ILD-35

WAVELENGTHS

| Order ID | Description / nanometers |
|--------------|---------------------------|
| W | White (6000K), Nominal |
| R | Red / 630nm |
| G | Green / 530nm |
| B | Blue / 470nm |
| IR850 | Infrared / 850nm |
| IR880 | Infrared / 880nm |
| IR940 | Infrared / 940nm |
| UV365 | Ultraviolet Short / 365nm |
| UV395 | Ultraviolet Long / 395nm |
| RGB | Red-Green-Blue |

GENERAL SPECIFICATIONS

| | |
|-----------------------------|---------------------------------|
| Power Source: | 24VDC ±5% |
| Cable (Standard): | 10-foot cable with flying leads |
| Housing: | Black Anodized Aluminum |
| Ambient Temp: | -20°C to 40°C |
| Lifetime Expectancy: | 75,000 hours (except UV) |

MB-FLD

| FLOOD LIGHTS | | | | | | | |
|--------------|--|--------------------------------|-----------------|-----------|--------------|-----------------------|------------------------------|
| MODEL | All models: H = 2.82 inches (7.2cm) Overall Width and Length Inches (cm) | Active Area Inches (cm) | Weight lbs / kg | Cable QTY | Cable Length | Cable Description | Maximum Input Current @24VDC |
| MB-FLD406 | 3.75 x 8.28 (9.52 x 21.0) | 2.88 x 6.78 (7.30 x 17.2) | 2.8 / 1.28 | 1 | 10ft | 18 AWG 4 Conductor | 1.3 amps |
| MB-FLD806 | 3.75 x 15.06 (9.52 x 38.25) | 2.88 x 13.56 (7.30 x 34.44) | 5.2 / 2.34 | | | | 2.8 amps |
| | | | | | | | |

| Wiring (4 conductors, flying leads)** | |
|---------------------------------------|---------------------------|
| Wire Color | Function |
| RED | +24VDC |
| WHITE | 0-10VDC INTENSITY CONTROL |
| BLACK | GROUND (24V RTN) |
| GREEN | SIGNAL GROUND |

| Wiring (4 conductors, without Intensity Control) | |
|--|------------------|
| Wire Color | Function |
| RED | +24VDC |
| WHITE | +24VDC |
| BLACK | GROUND (24V RTN) |
| GREEN | GROUND (24V RTN) |

| M12 (5 position male)** | |
|---|---------------------------|
| Pin # | Function |
| 1 | +24VDC |
| 2 | 0-10VDC Intensity Control |
| 3 | GROUND (24V RTN) |
| 4 | SIGNAL GROUND |
| 5 | No Connection |
| The M12 connector option is not recommended for lights rated more than 4 amps | |

| Wiring with ULC-2 | |
|---|-----------|
| Wire Color | Function |
| RED, WHITE (+) | LED INPUT |
| BLACK, GREEN (-) | |
| Terminated within a 2 position ULC-2 output connector (Phoenix Contact P/N: BCP-508-2) | |

**Note: The 0-10VDC Intensity Control input can accept voltages from 0-24VDC where the light will operate at full intensity in the 10-24VDC range. The light is proportionally dimmer for any Intensity Control voltage less than 10VDC and the light is OFF at approximately 0V or not connected (floating).

MB-FLD

| PART NUMBER KEY | | | | | | | | | | | | | |
|--|---------------------------|---|--|---|--------------------------------|---|-----------|--|--|---|--------------|--|--------------------------|
| MODEL | SIZE | - | WAVELENGTH | - | DRIVER* (most common) | - | LENS | - | DIFFUSER | - | CABLE LENGTH | - | CONN.** (most Common) |
| MB-FLD | XXX | - | XXXXXX | - | XXXXXX | - | XXX | - | XX | - | XXX | - | XXXX |
| MB-FLD | 406 (6.5") 806 (13.0") | | W (White 6000K, Nominal) R (Red 630nm) G (Green 530nm) B (Blue 470nm) IR850 (Infrared 850nm) IR880 (Infrared 880nm) IR940 (Infrared 940nm) UV365 (UV Short 365nm) UV395 (UV Long 395nm) RGB | | 24Z 24Z-TRG 24-ILD U¹ | | L11 (11°) | | CC (Clear Cover) D2 (Single Matte) D3 (TIR/SLK) D4 (Milky White) D5 (Double Matte) | | 5M 10M | Length can be customized: ex.7M=7meters | M12D¹ ² BC¹ ³ |
| | | | | | | | | | | | | | |
| Example 1: MB-FLD406-W-24Z-CC Example 2: MB-FLD806-W-24-ILD-CC-5M | | | | | | | | ¹Not available in lights exceeding 4A input current ²Default cable length for an M12D connector is 19 inches ³Default cable length for a Barrel Connector is 10 feet | | | | | |

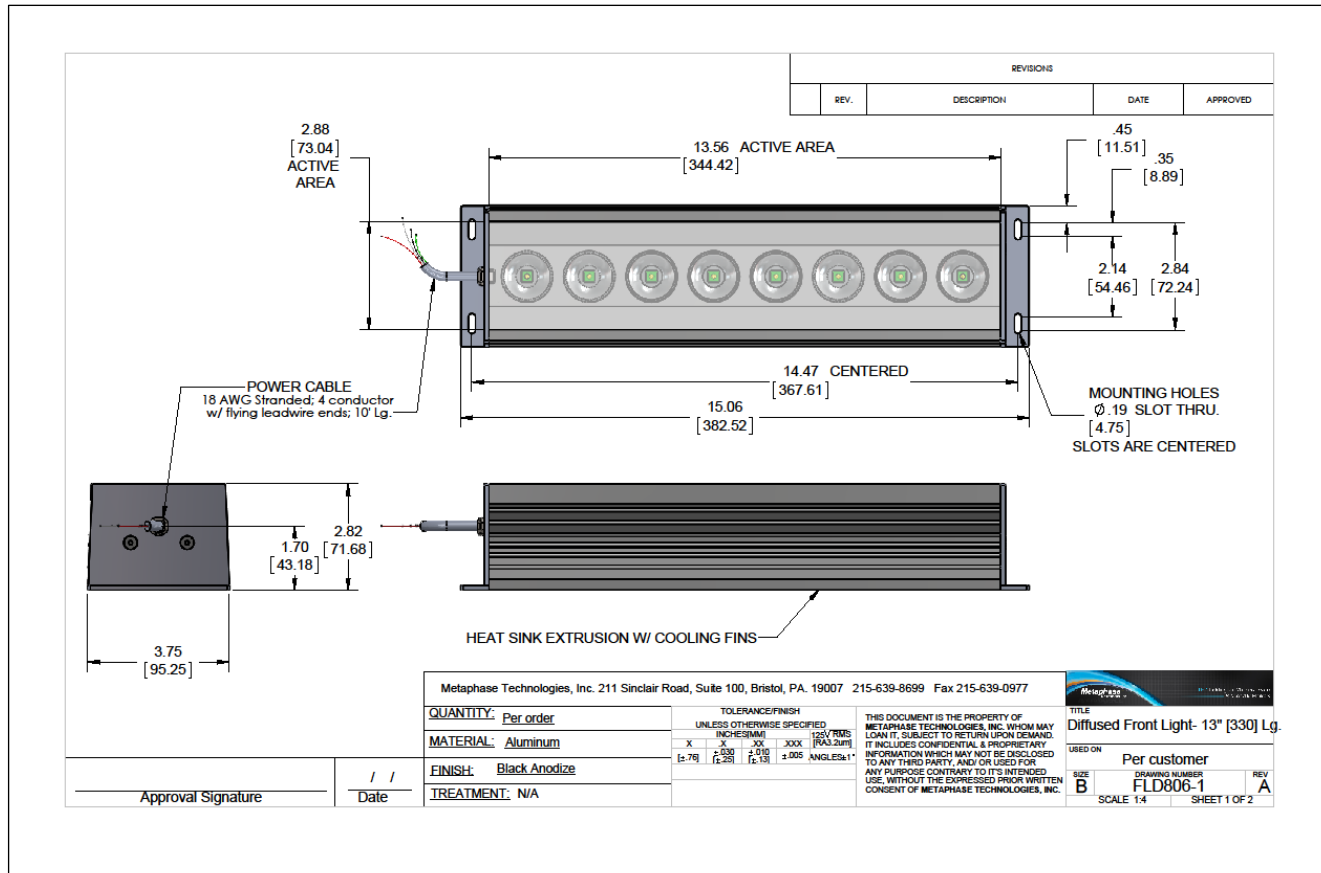
Contact Metaphase Technologies or your local representative for options such as custom diffusers, lenses, polarizers, IP-rated enclosures for harsh environments, higher intensity, custom wavelengths, higher uniformity, etc. Not all options are available for all lights.

*(Link to Driver Options Key)

**(Link to Connector Key)

MB-FLD

Sample Model Number: **MB-FLD806-W-24Z**



COMPLIANCE



CONTACT US

Contact Metaphase Technologies at **215-639-8699** or your local representative for additional details, options and customizations.