

## MB-CO

Dome lights are ideal for providing even illumination of curved, specular or rough surfaces. Coaxial lights provide diffused on-axis illumination. Using the coaxial light with a dome light allows for complete, uniform, and diffused lighting by filling the void created by the dome's camera viewing port. The Metaphase CODL (Co-Axial Dome Light) conveniently packages these units together to make integration of the DAL with the Dome light simple and easy. The Dome and Coaxial portions of the MB-CODL have separate intensity control lines.



### FEATURES

- High intensity and uniform, non-directional illumination across the entire lighting hemisphere
- Ideal for highly reflective surfaces and textured or topographic objects
- LED thermal management for stable performance
- Provides cloudy day illumination, minimizing shadows and glare
- Flicker free performance and instant start up with Metaphase analog driver technology
- Enclosed workspace blocks interference of ambient light
- Optical grade reflector coating reflects 99.9% of light for optimum diffused output
- Built-in Constant Current Driver with 0-10VDC Intensity control for both the Co-axial and Dome zones
- Compatible with DDC-3 and ILD-35 Dimmers
- External Constant Current driver (ULC-2) versions available

### WAVELENGTHS

Order ID	Description / nanometers
<b>W</b>	White (6000K), Nominal
<b>R</b>	Red / 630nm
<b>G</b>	Green / 530nm
<b>B</b>	Blue / 470nm
<b>IR850</b>	Infrared / 850nm
<b>UV365</b>	Ultraviolet Short / 365nm

### GENERAL SPECIFICATIONS

<b>Power Source:</b>	24VDC ±5%
<b>Cable (Standard):</b>	10-foot cable with flying leads
<b>Housing:</b>	Black Anodized Aluminum
<b>Ambient Temp:</b>	-20° to 40°C
<b>Lifetime Expectancy:</b>	75,000 hours (except UV)

MB-CO

Co-Axial Dome Lights							
Model*	“CO” is Co-Axial Light followed by Active Area [inches x inches] “DL” is Dome Light followed by model # Identifier Expanded Model #	DOME ID (Inside Diameter) = Active Area Dome Dimensions: OD x ID x H Inches (cm)	Weight lbs (Kg)	Cable QTY (one per light)	Cable Length	Standard Cable Description AWG/Conductors	Total (both lights) Typical Current @24VDC (White)
MB-CO1DL2	MB-CO1x1DL206	4.00 x <b>1.86</b> x 3.40 (10.16 x 4.71 x 8.64)	1.6 (.72)	2	10ft	Coax 24/4 Dome 24/4	0.4A
MB-CO1DL3	MB-CO1x1DL306	7.40 x <b>4.00</b> x 4.35 (18.80 x 10.16 x 11.05)	2.6 (1.18)				0.7A
MB-CO1DL4	MB-CO1x1DL406	11.53 x <b>7.00</b> x 6.48 (29.28 x 17.78 x 16.46)	4.2 (1.90)			Coax 24/4 Dome 18/4	1.1A
MB-CO2DL6	MB-CO2x2DL606	18.90 x <b>12.00</b> x 10.64 (48.01 x 30.48 x 27.03)	12.6 (5.72)				1.7A
MB-CO2DL7	MB-CO2x2DL706	25.08 x <b>17.5</b> x 13.11 (63.70 x 44.45 x 33.30)	19.0 (8.62)			Coax 24/4 Dome 18/6	2.3A
MB-CO2DL9	MB-CO2x2DL906	36.00 x <b>27.50</b> x 18.90 (91.44 x 69.85 x 48.00)	36.5 (16.6)				3.9A
MB-CO2DL10	MB-CO2x2DL1006	43.00 x <b>34.56</b> x 23.12 (109.2 x 87.78 x 58.72)	44.1 (20.0)				6.4A
MB-CO2DL12	MB-CO2x2DL1206	52.00 x <b>43.56</b> x 26.82 (132.1 x 110.6 x 73.20)	59.0 (26.8)				9.0A

\*Custom sizes and configurations available

**MB-CO**

Wiring (4 conductors, flying leads)**	
Wire Color	Function
RED	+24VDC
WHITE	0-10VDC INTENSITY CONTROL
BLACK	GROUND (24V RTN)
GREEN	SIGNAL GROUND

Wiring (4 conductors, without Intensity Control)	
Wire Color	Function
RED	+24VDC
WHITE	+24VDC
BLACK	GROUND (24V RTN)
GREEN	GROUND (24V RTN)

Wiring (6 conductors, flying leads)**	
Wire Color	Function
RED, BROWN	+24VDC
YELLOW	SIGNAL GROUND
BLACK, BLUE	GROUND (24V RTN)
ORANGE	0-10VDC INTENSITY CONTROL

When not using Intensity Control, connect the 0-10V control line to +24VDC and connect Signal Ground to Ground (24V RTN)

Wiring (6 conductors, without Intensity Control)	
Wire Color	Function
RED	+24VDC
BROWN	+24VDC
ORANGE	+24VDC
BLACK	GROUND (24V RTN)
BLUE	GROUND (24V RTN)
YELLOW	GROUND (24V RTN)

M12 (5 position male)**	
Pin #	Function
1	+24VDC
2	0-10VDC INTENSITY CONTROL
3	GROUND (24V RTN)
4	SIGNAL GROUND
5	No Connection

The M12 connector option is not recommended for lights rated more than 4 amps

Wiring with ULC-2 (4 conductor)	
Wire Color	Function
RED, WHITE (+)	LED INPUT
BLACK, GREEN (-)	

Terminated within a 2 position ULC-2 output connector (Phoenix Contact P/N: BCP-508-2)

\*\*Note: The 0-10VDC Intensity Control input can accept voltages from 0-24VDC where the light will operate at full intensity in the 10-24VDC range. The light is proportionally dimmer for any Intensity Control voltage less than 10VDC and the light is OFF at approximately 0V or not connected (floating).

**MB-CO**

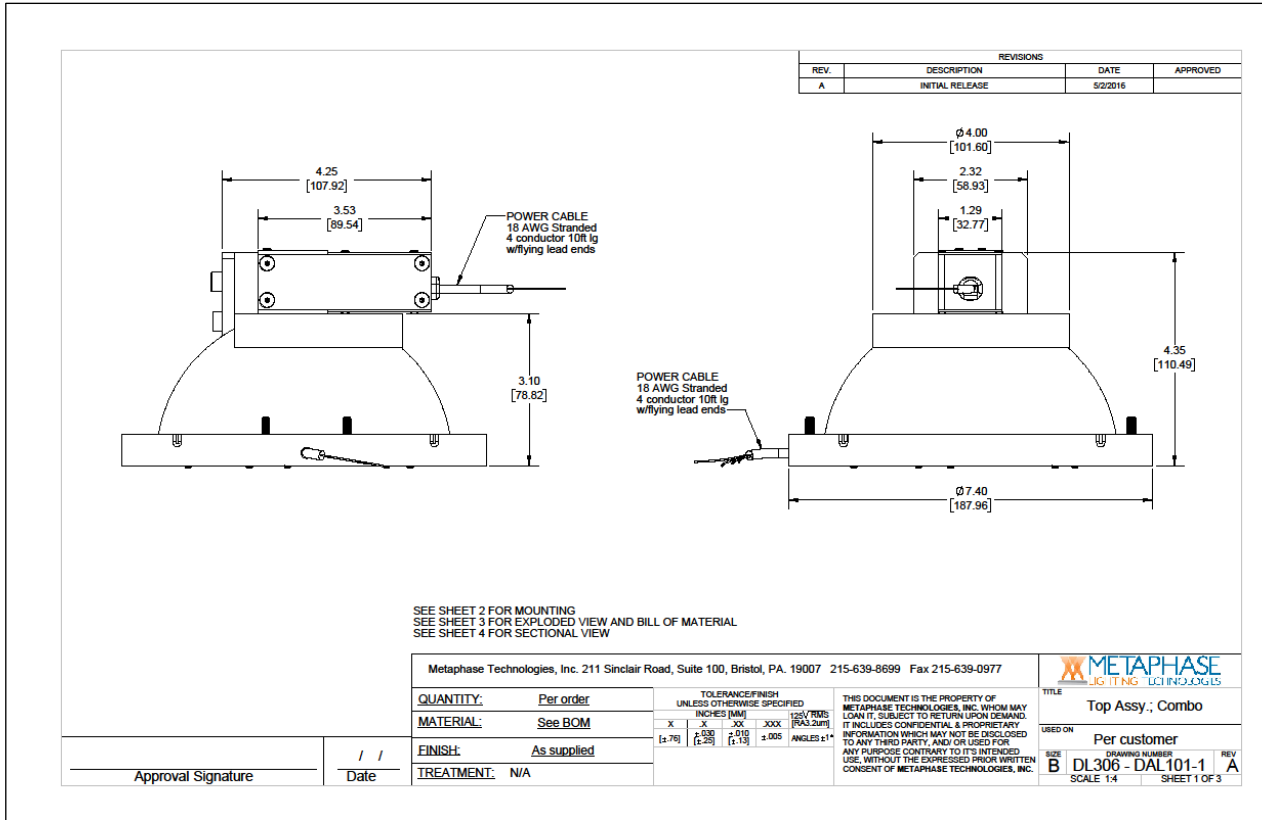
PART NUMBER KEY									
MODEL	SIZE (inside diameter)	-	WAVELENGTH	-	DRIVER* (most common)	-	CABLE LENGTH	-	CONN.** (most common)
MB-CO	XXX	-	XXXXX	-	XXXXXXX	-	XXX	-	XXXX
<b>MB-CO</b>	<b>1DL2</b> (Ø1.86") <b>1DL3</b> (Ø4.00") <b>2DL3</b> (Ø4.00") <b>2DL4</b> (Ø7.00") <b>2DL6</b> (Ø12.0") <b>2DL7</b> (Ø17.5") <b>2DL9</b> (Ø27.5") <b>2DL10</b> (Ø34.56") <b>2DL12</b> (Ø43.56")		<b>W</b> (White 6000K, Nominal) <b>R</b> (Red 630nm) <b>G</b> (Green 530nm) <b>B</b> (Blue 470nm) <b>IR850</b> (Infrared 850nm) <b>UV365</b> (UV Short 365nm)		<b>24Z</b> <b>24NZ</b> <b>24-ILSXXX</b> <b>24-ILD</b> <b>U<sup>1</sup></b>		<b>5M</b> <b>10M</b>		<b>M12D<sup>1 2</sup></b> <b>BC<sup>1 3</sup></b>
					XXX=rate in µs Example: 250	Length can be customized: ex.7M=7meters		Select or leave blank for flying leads	
Example 1: <b>MB-CO1DL3-W-24Z</b> Example 2: <b>MB-CO2DL7-W-U</b>					<sup>1</sup> Not available in lights exceeding 4A input current <sup>2</sup> Default cable length for an M12D connector is 19 inches <sup>3</sup> Default cable length for a Barrel Connector is 10 feet				

Contact Metaphase Technologies or your local representative for options such as custom diffusers, lenses, polarizers, IP-rated enclosures for harsh environments, higher intensity, custom wavelengths, higher uniformity, etc. Not all options are available for all lights.

[Link to \\*Driver Options Key / \\*\\*Connector Options Key](#)

**MB-CO**

Sample Model Number: **MB-CO1DL3-W-24Z**



**COMPLIANCE**



**CONTACT US**

Contact Metaphase Technologies at **215-639-8699** or your local representative for additional details, options and customizations.