

# AI-based defect detection that exceeds the ability of expert inspectors



# A better option for inspections requiring high sensitivity

## Meeting sensory inspection needs amid heightened product quality demands

Manufacturers face pressure to improve processes where highly detailed visual inspection is required to assure product quality. It's important to reliably identify subtle defects even on flexible lines producing a wide range of items. This tedious, slow, and error prone inspection step can now be improved with the latest machine vision and artificial intelligence technologies that can recognize intricate object features and can quickly learn pass/fail inspection criteria. While many AI solutions faces challenges with large amounts of image data, specialized hardware and engineering expertise, Omron is now offering an easy to implement and reliable AI machine vision technology helping enable its use in a wide variety of applications.





## AI reproduces human sensibility and experience

To solve these challenges, Omron developed new defect detection AI that reproduces the techniques of skilled inspectors. This AI is now part of the FH Vision System.

### Barriers to automation

---

- 1 Defect detection dependent on human senses
- 2 Inspection criteria dependent on workers' expertise
- 3 Shortage of engineers who examine automation

### AI Solutions

---

- 1 Page: 4  
AI captures defects with human-like sensitivity
- 2 Page: 6  
AI accepts good products with the precision of an experienced inspector
- 3 Page: 8  
No special environment is required

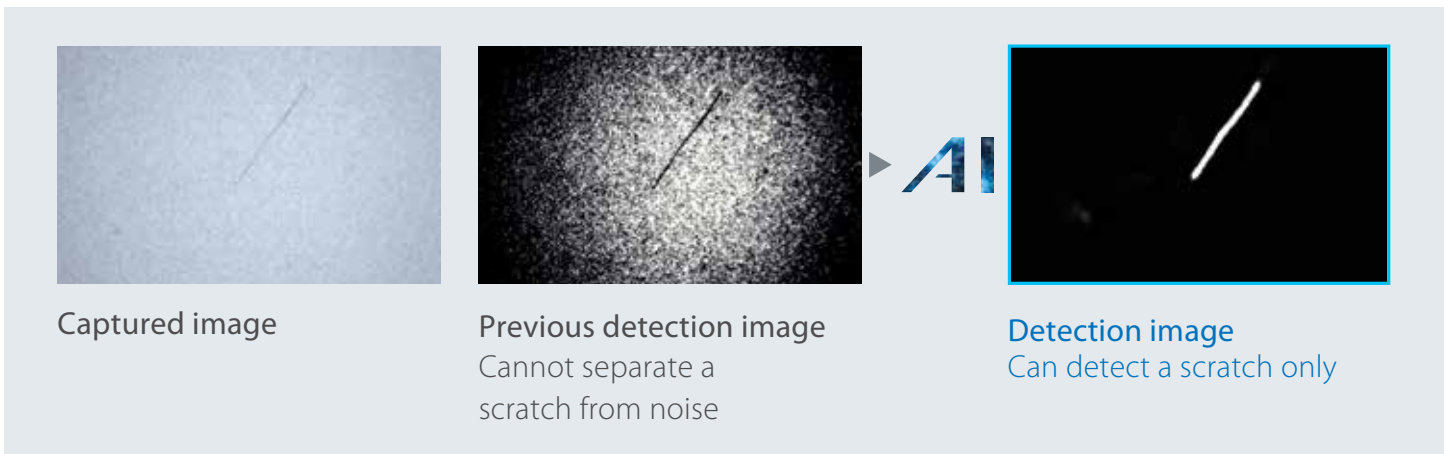
# AI captures defects with human-like sensitivity

Defect detection tasks that rely on human sensibility are a challenge to automate. Fortunately, powerful new AI technology can match the skills and capabilities of experienced inspectors.

The latest capabilities of the FH Vision System include a new AI-based image filter that reproduces the technique that skilled inspectors use to identify a defect on any product background. Scratches and blemishes that were once difficult to capture can now be identified even without the use of samples or adjustment.



Automating human vision-based inspection with the FH Series



# AI reproduces human expertise through learned criteria



## AI Scratch Detect Filter<sup>1</sup>

The AI Scratch Defect Filter learns by means of images in which human inspectors noticed defects. Whereas previous inspection methods found the unexpected size, shape or color of a particular defect to be a barrier to automation, AI successfully extracts abnormalities by judging their features without definition. The learned data facilitates defect detection on processed surfaces and other uneven backgrounds that previously posed an insurmountable challenge.

Captured image



Extracted scratch (internal image)

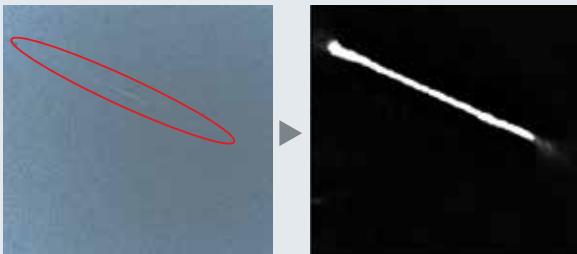


1. The FH-UMAI1 Scratch Detect AI Software Installer is required to use AI Scratch Detect Filter.

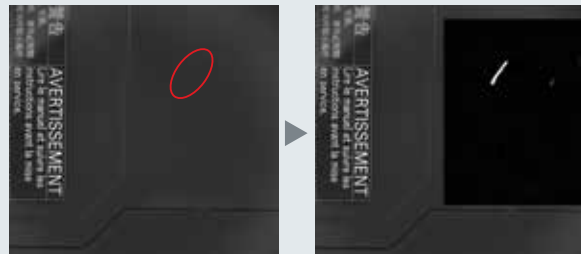
## Automatic detection of various defects without definition and learning

Regardless of material type, color, or size, defects can be extracted reliably without previously required definition and adjustment.

Scratch on sandblasted metal



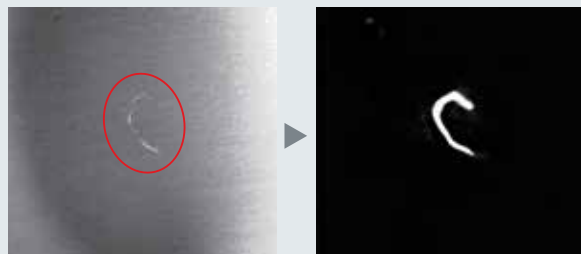
Scratch on resin products



Black scratch on hairline finish



White scratch on shaded hairline finish



# AI accepts good products with the precision of an experienced inspector

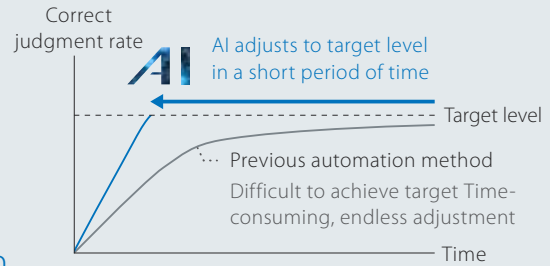
Sensory inspection requires a certain tolerance for variations that don't pass a certain threshold.

Determining what variations are acceptable is a key capability of expert inspectors and poses a challenge for automated inspection systems.



The FH Series can determine acceptable variation tolerances.

Omron's AI Fine Matching tool learns from the image data of non-defective products to quickly acquire the "expertise" that inspectors develop over the course of many years. This reduces costs and boosts productivity through automation.



## Target inspection level: Reduce over-detection

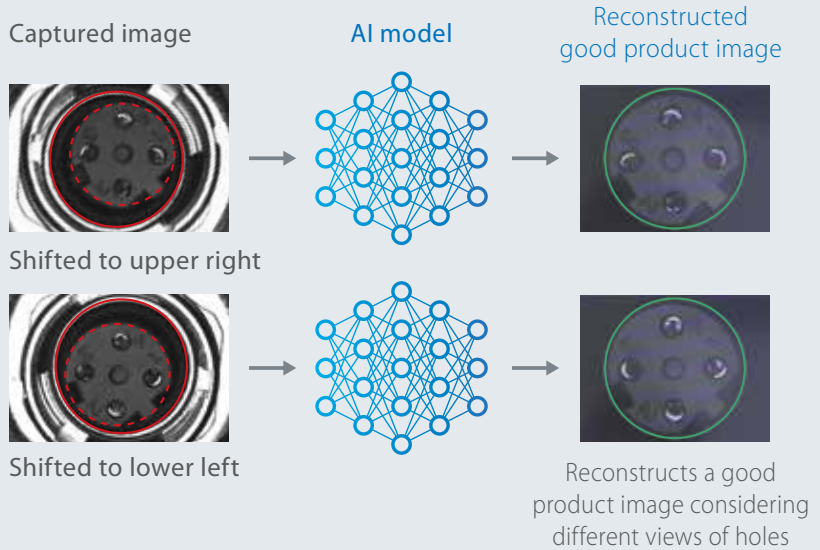
		Difference image	
		Previous automation method	AI
Contamination inspection of LED modules		Detects position differences, not foreign materials, as defects	Detects foreign materials only and ignores position differences
Defective product With foreign materials			
Non-defective product Position difference of die			
Non-defective product Position difference and light variation of surrounding part			

# AI reduces overdetection



## AI Fine Matching

AI Fine Matching identifies a feature that is not included in good products as a defect. AI learns images of good products with variations, and generates an AI model. Every time an inspection is carried out, AI reconstructs a model that is presumed to be a good product. AI extracts a difference between the reconstructed good product image and a captured image to identify a defect, reducing overdetection.



## AI makes it easy to avoid overdetection

PATENT PENDING<sup>1</sup>

Three quick steps on the settings screen guide the user through the process of creating the good product model with the minimum number of images.

### 1 Prepare images

Although standard AI processing requires a huge number of images for learning, the FH Series requires only 100 to 200 images.

Good product image

Defective product image

### 2 Create model

The system suggests images to learn, helping to complete the good product model.

AI model

### 3 Check results

Test is automatically performed using images prepared in Step 1. You don't need to adjust parameters for differential inspections.

Correlation score

Image A:10

Image B:150

...

When a good product is judged as defective, AI gives each image a correlation score to visualize the degree of overdetection. This facilitates selecting images that need to be learned to reduce overdetection.

<sup>1</sup> "Patent pending" means that we applied for a patent in Japan, and "Patented" means that we obtained a patent in Japan. (as of May 2020)

# No special environment is required

With the FH Series, there's no need for high-end hardware or specialized engineers who can configure the system to suit your needs. Our general-purpose vision system makes it easier than ever to introduce AI into production sites.

## Vision controller with AI functionality

Artificial intelligence has traditionally required a high-end environment, but our lightweight creative solution comes in the form of user-friendly processing items that have been integrated into our popular FH Series hardware.



## No special hardware for AI required

It used to be difficult to introduce AI technology to many inspection processes because of its hardware requirements. The FH Series does not require special hardware, facilitating the introduction of this technology. The FH Series does not require special hardware, facilitating introduction.

## No AI engineer required

In order to reliably use AI technology in processes, the engineer used to have not only image processing skills but also programming and maintenance skills. With the FH Series, however, you can use AI technology just like operating a standard vision sensor. No dedicated AI engineer is required.



FH-5550/5050  
High-speed, Large-capacity Controller

Intel® Core™ i7 processor



### Outstanding processing speed

Ultra-high-speed CPU



Large-capacity RAM



4 times faster<sup>1</sup> than our previous models

10 times larger<sup>1</sup> than our previous models

- 1 Machine control network Cycle: 125 μs



- 2 Data output High-speed interface: USB 3.0



# High-resolution cameras

We offer a range of cameras that can capture high-resolution images suitable for sensory inspection at high speeds.



20.4 Mpix camera

## Ultra-high-speed sensing technology in a compact design

There was a trade-off between high-resolution image capture like the human eye and inspection processing speed. We use new CMOS image elements and dual transfer technology to capture high-resolution images while transferring images at high speeds. This facilitates applications that previously required multiple cameras or a mechanism to move a camera.

## MDMC light with flexible lighting patterns

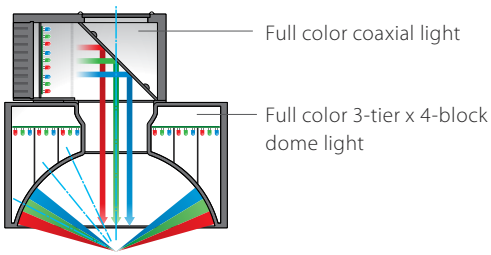
This light can be adjusted to defects by combining the illumination colors and angles like humans do. Even if new objects or inspection items are added after installation, there is no need to add or change the light—just change the illumination pattern. The illumination patterns can be registered as settings, facilitating duplicating production lines.



MDMC<sup>2</sup> Light

### Illumination structure

You can choose the best pattern by combining illumination directions x full color RGB x 128 brightness levels of 13 blocks.



# Software for flexible automation

## Flexible image capture



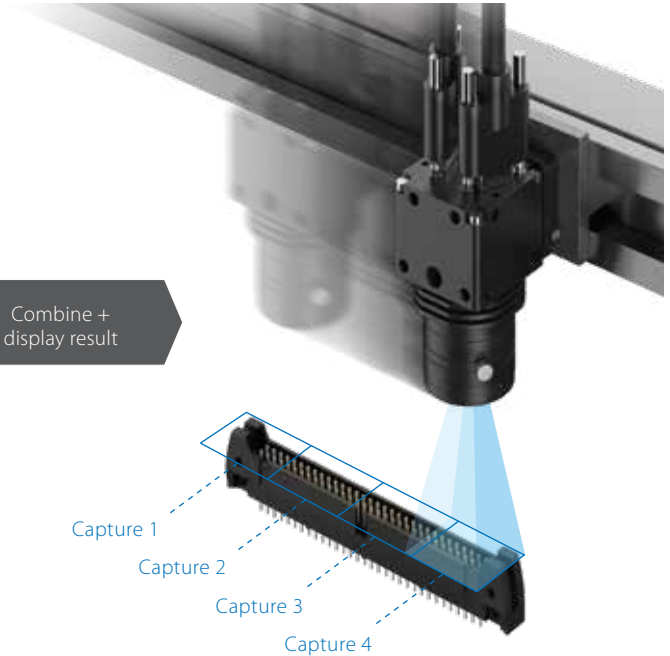
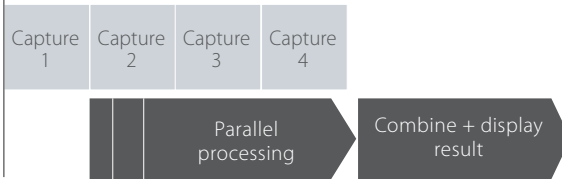
### Multi-Trigger Imaging captures long objects at high speeds

The Multi-Trigger Imaging function can capture images and process them in parallel, leveraging the speed of the multi-core processor to capture long objects at high speeds.

Conventional vision sensor



FH Series



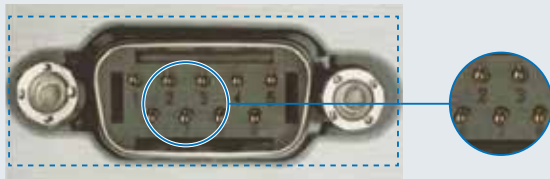
### Camera Image Input HDR optimizes contrast

Camera Image Input HDR helps create optimized HDR images under variable ambient conditions. Once you specify the optimum area to capture on the image, the FH Series automatically adjusts the shutter speed while capturing images and combining the images.

Adjusts brightness to suit your specified area

#### Optimized for the entire field of view

While the contrast around the pins is low, reduced reflection enables capturing a clear image of the entire connector.



#### Optimized for the connector

Although reflection occurs at the surrounding part, a clear image of the pins can be captured.



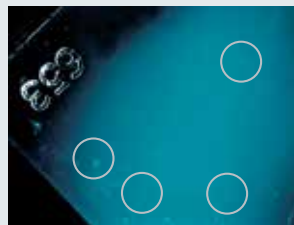
Detects low-contrast defects in high-contrast mode

Previously



Low contrast makes the surface appear uniform.

HDR high-contrast image



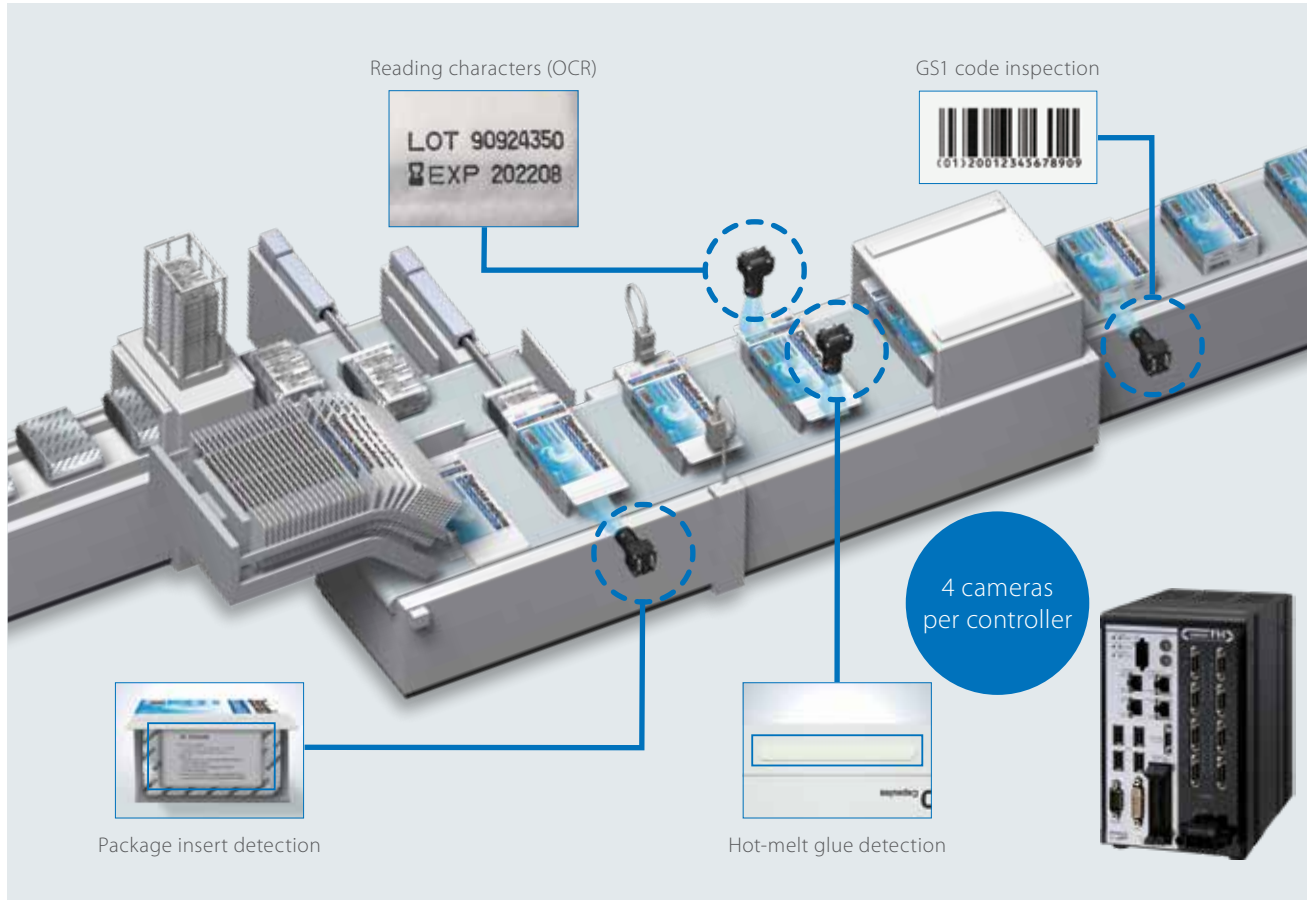
Increased contrast reveals many scratches and blemishes.

## Parallel processing for different inspections

### Multi-Line Random-Trigger inspects at up to four different timings

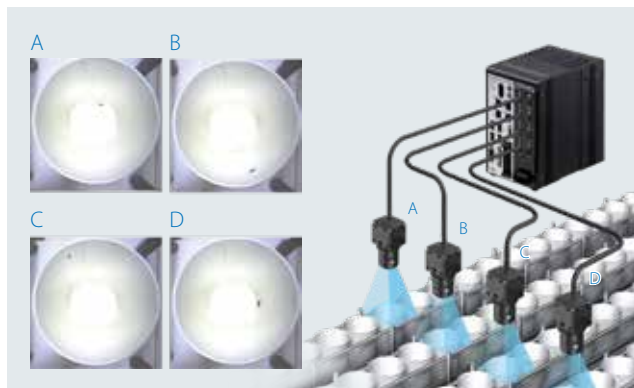
A single controller can perform inspections at different points at different timings. Controllers installed for each process can be integrated into one, reducing initial costs and saving space.

#### Packaging process of pharmaceuticals



#### Contamination inspection of beverage containers

A single controller that can control each line saves initial costs and space.



#### Appearance inspection of rechargeable battery cells

Four cameras can be connected to one controller, enabling simultaneous inspection of dents and scratches from four directions.



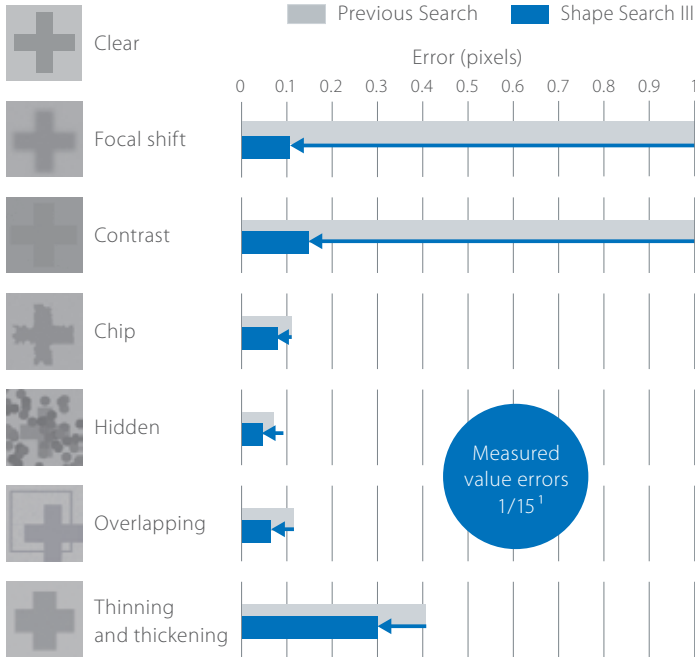
# Software for flexible automation

## High-speed, high-precision positioning

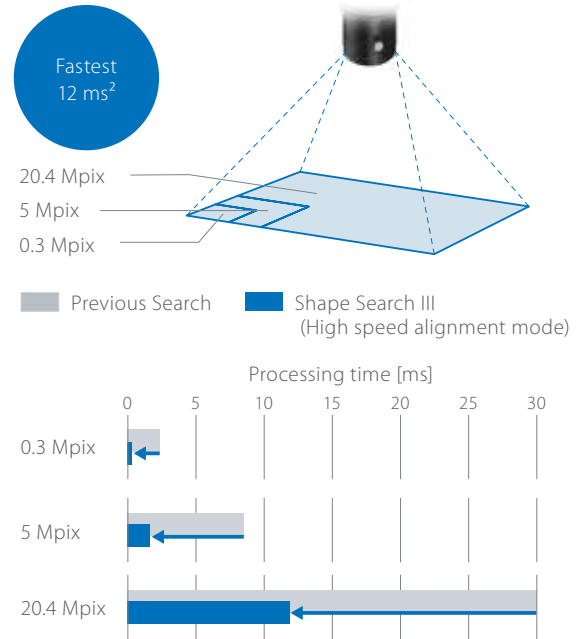


### Shape Search III is robust against shape variations

High-precision and robust positioning is possible even under the adverse conditions, such as changes in environments and materials.

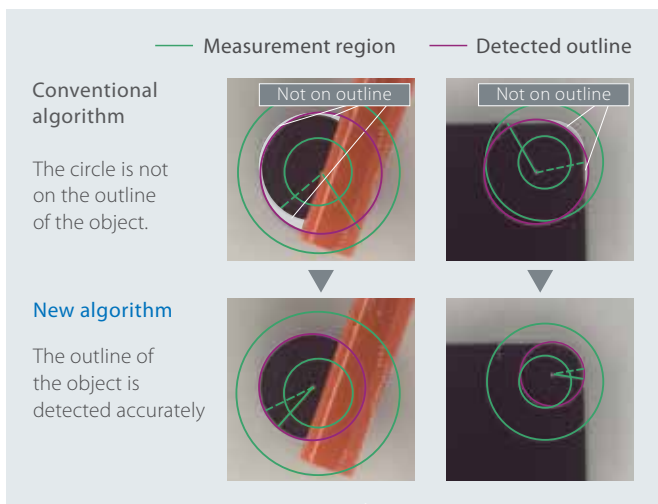


A 20.4 Mpix camera can search a positioning mark in as fast as 12 ms<sup>2</sup>, and a 5 Mpix camera, widely used for alignment applications, in as fast as 2 ms.



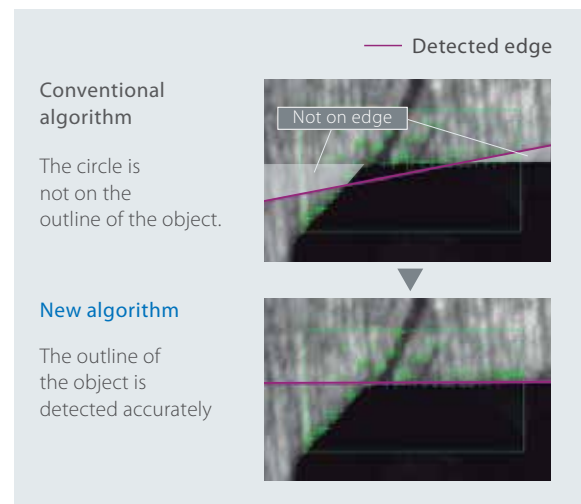
### Circular Scan Edge Position accurately estimates the center and radius of a circle

The new algorithm accurately detects a whole circle from a part of the circle.



### Scan Edge Position removes noise to detect edges

This algorithm accurately estimates lines even when the edges are unclear due to variations in objects or disturbance.

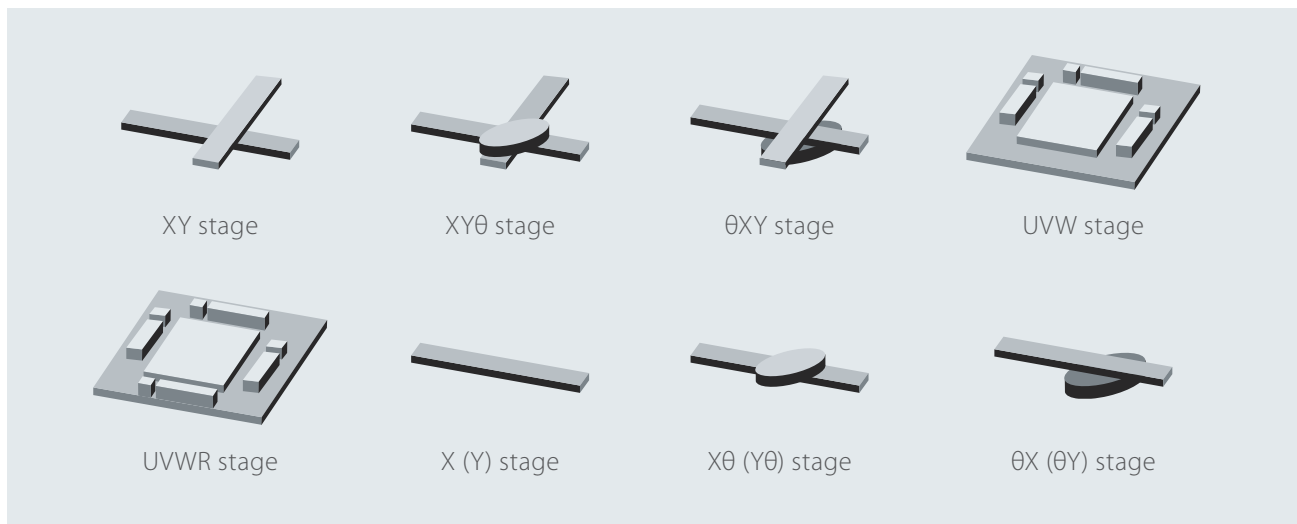


1. The value measured under our specified conditions is provided for reference.  
2. The value measured under our specified conditions is provided for reference. 20.4 Mpix camera.



## Stage Data calculates for various stages

The popular single axis +  $\theta$  axis stages as well as UVW stages can be used. The use of the same axis for both handling and positioning simplifies machine configuration.



## Robot Setting Tool simplifies connecting robots

Communication programs to connect robots from various vendors and FH flowcharts required for robot applications are provided free of charge. You can quickly set up robot vision applications.

### Applications

#### Pick



#### Offset compensation



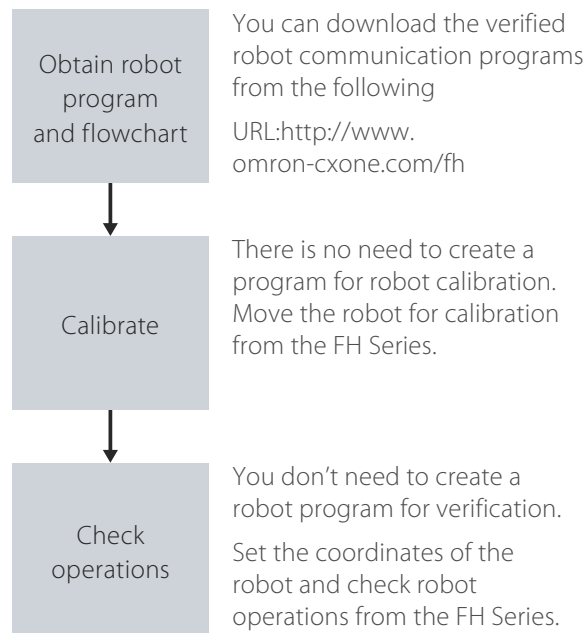
#### Place



#### Combination



### Simple set-up steps

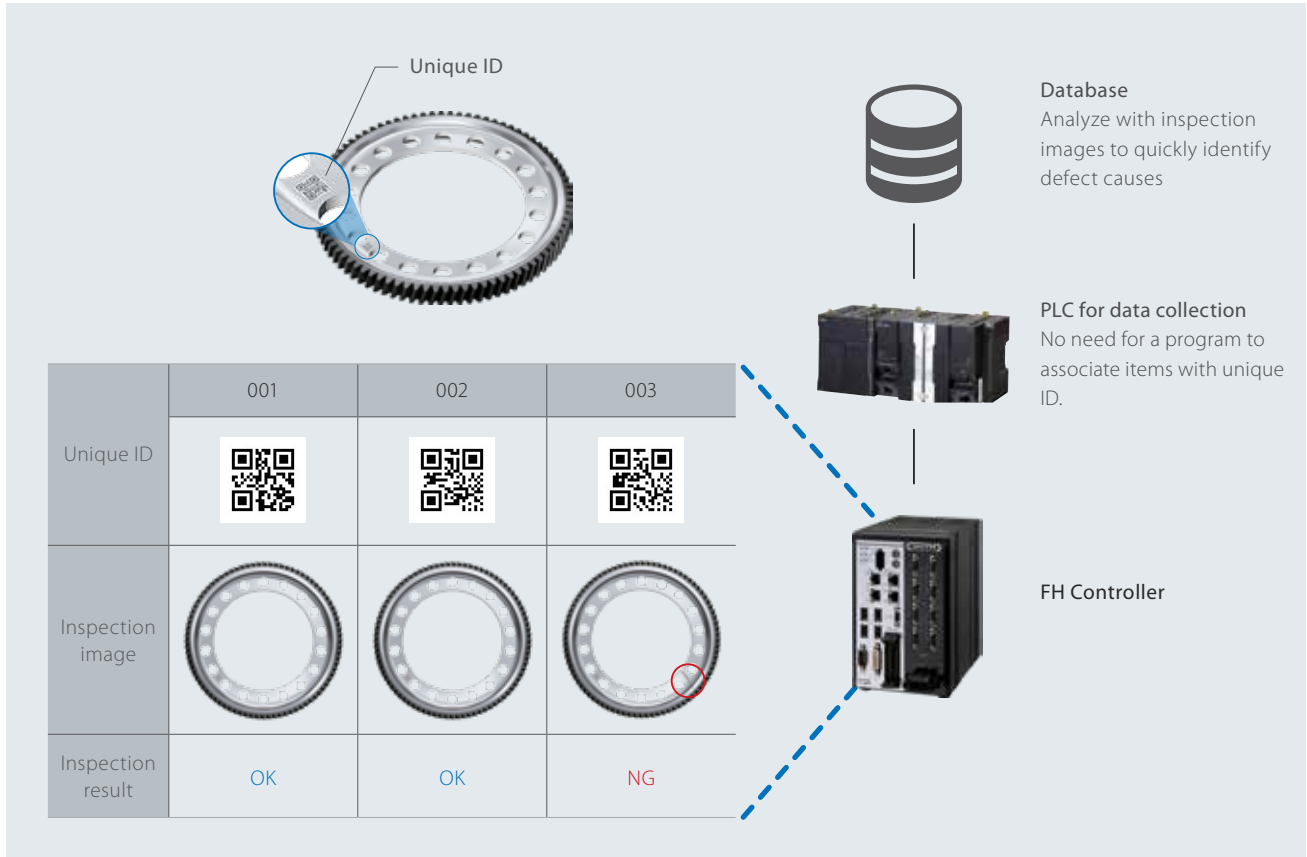


# Software for flexible automation

## Unique identification and quality control

### Unique ID associated with inspection image and result

The FH Series can associate a unique ID with the inspection image and result, and then output them to the host device. You can immediately find required inspection images and quickly identify causes of fails.



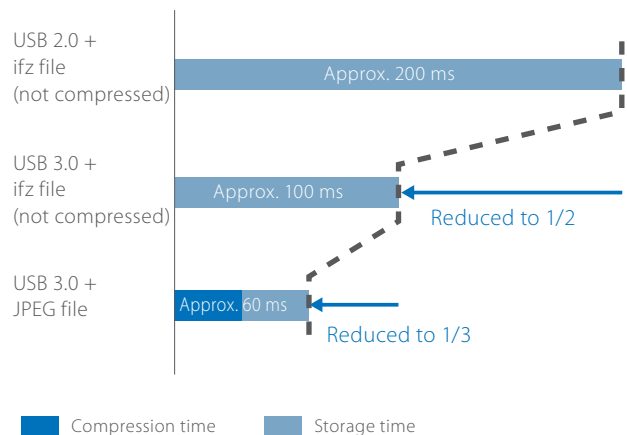
### High-speed image storage

The amount of inspection image data required for defect cause analysis can be so large that conventional controllers are unable to store it given their storage time and capacity constraints.

The high-speed, large-capacity controller has USB 3.0 ports and the improved algorithm to compress image data at high speeds, enabling all images to be stored to meet increasing needs in quality control.

The times in the right figure provided for reference only and their accuracy cannot be guaranteed. They are measured under the following conditions:

- FH-5050 Controller
- 5 Mpix monochrome images
- Size of converted JPEG file: 0.6 MB





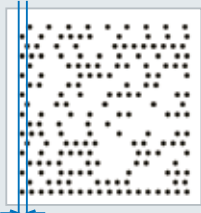
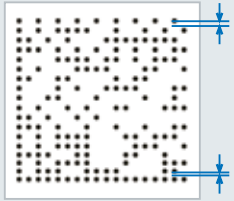

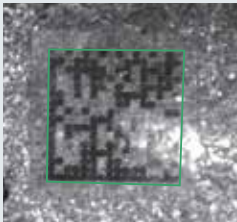
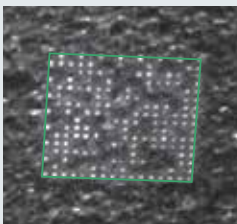


## 2D Code II provides powerful code reading

Recognition rate 2 times<sup>1</sup>

3 times faster<sup>1</sup>

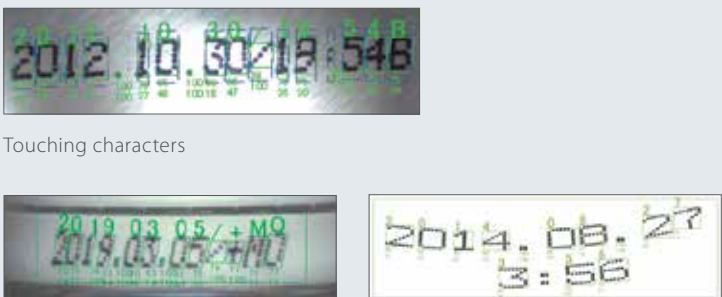
The FH Series incorporates a dedicated algorithm for reliable and fast 2D code reading even under variable ambient brightness or adverse conditions such as after processing or washing.

<p>Changing ambient brightness</p>  <p>Chips due to reflection</p>  <p>Low contrast</p>	<p>Poor printing quality in high-speed line</p>  <p>Variations in start positions</p>  <p>Uneven line spacing</p>	<p>After processing or washing</p>  <p>Waterdrops and oil stains</p>  <p>Scratched damage</p>	<p>Poor printing quality on coarse surface</p>  <p>Molding variations of forged object</p> <p>Print Quality Grading Function</p> <ul style="list-style-type: none"> <li>· ISO/IEC 15415</li> <li>· ISO/IEC TR29158</li> </ul>
--	--	--	--



## OCR reliably reads difficult-to-read characters

OCR can reliably read characters printed too close to each other or on curved surfaces. Also plus signs can be read.



Touching characters

Curved character string including plus sign **NEW**

Curved character strings



## Character Inspection reads special fonts

Character Inspection recognizes special fonts and non-alphanumeric characters based on pattern search using the dictionary set up by the user.



Special fonts

Japanese characters

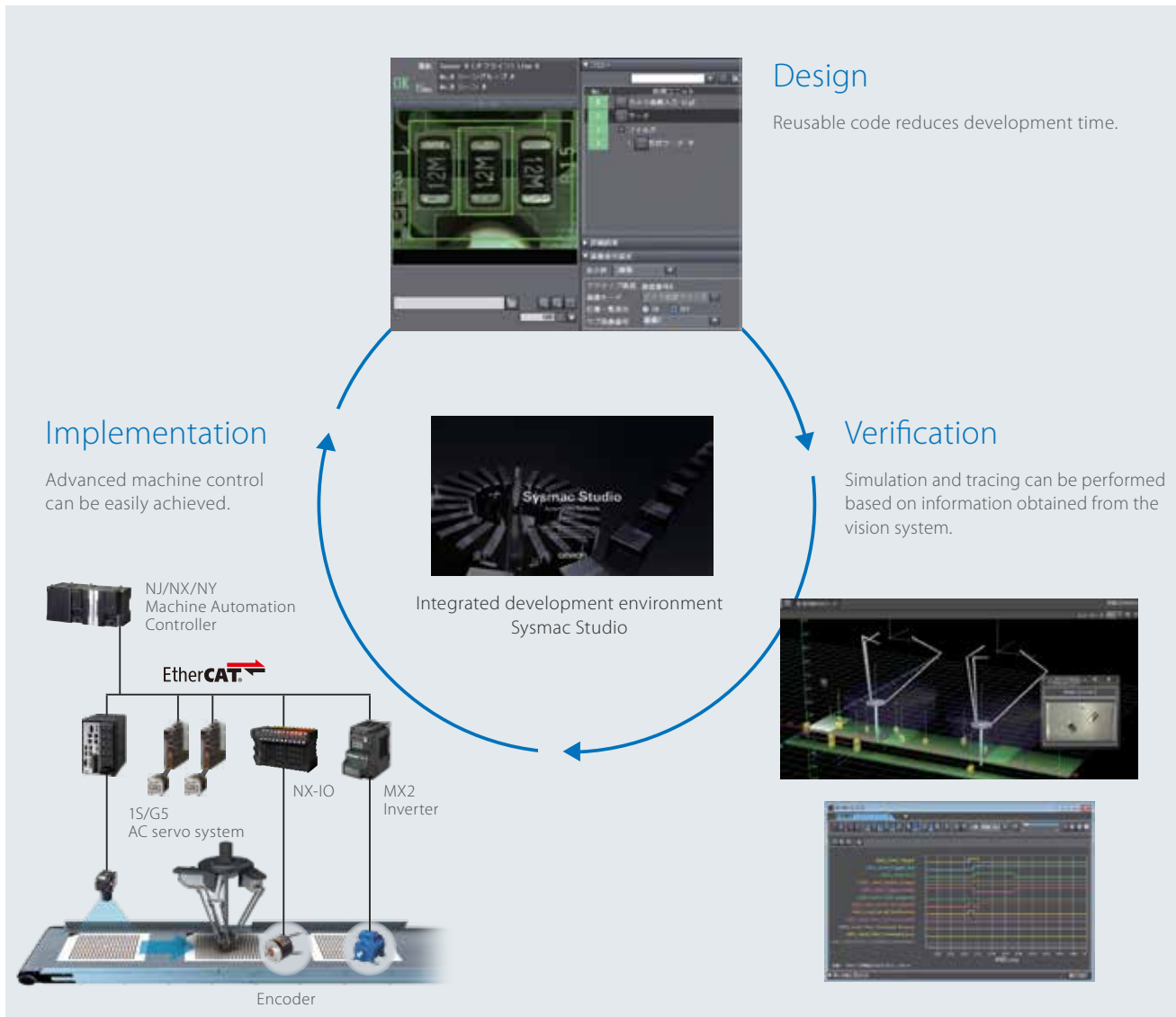
1. The average value measured under our specified conditions is provided for reference.

# Software for flexible automation

Design interface for quick setup

## Integrated development environment Sysmac Studio

Sysmac Studio is a unique environment that integrates logic, motion and drives, robotics, safety, visualization, and information technologies in a single project, thus reducing the learning curve and the intra-operative software costs.

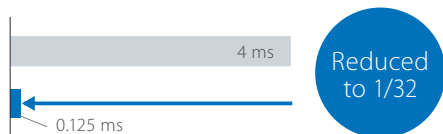


### EtherCAT® for high-speed data transfer to control various devices

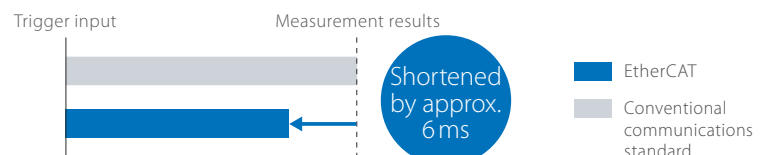
Data communications cycle: 125 μs

You can use EtherCAT® to connect NJ/NX Machine Automation Controllers and 1S/G5 AC Servo System to increase the control speed of everyday communications protocols from position detection to starting axis motion.

Communications cycle



Time from trigger input to producing measurement results



Note: The times given above are typical times. They depend on parameter settings.



## Total Design Management Editor simplifies complex processing design

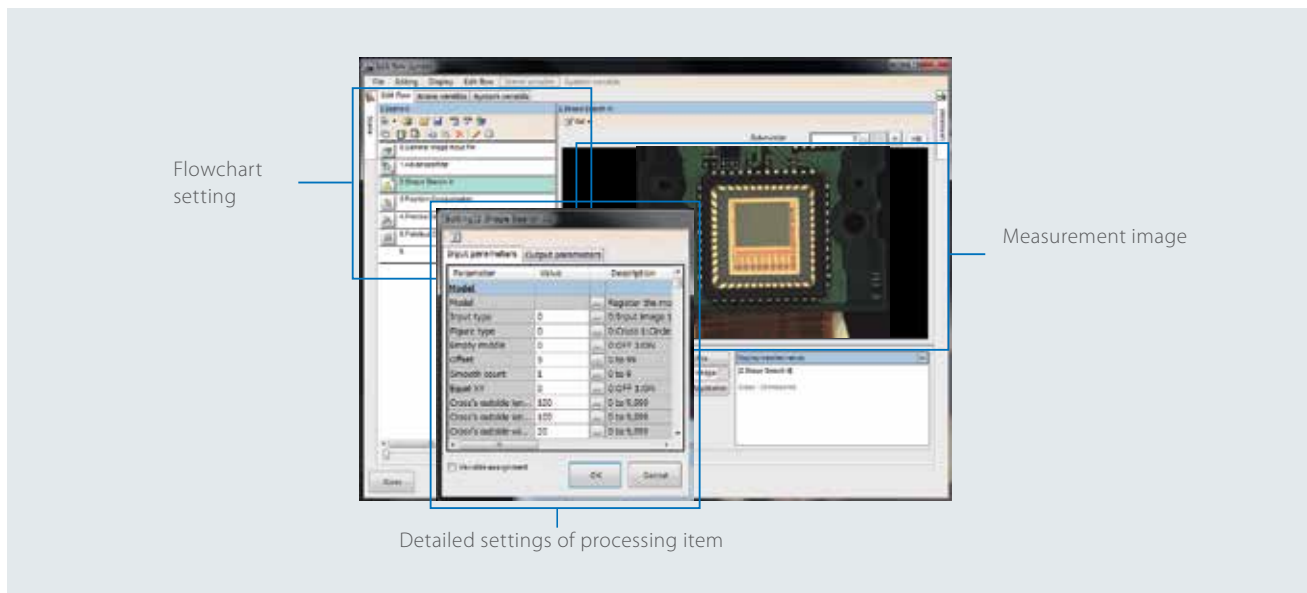
This design interface includes pre-installed screens for all phases, from design through to setting and operation. Just select processing items and determine the order to manage variables. Time-consuming calculations and inputs are no longer required.

### Easy setting

All the common settings of multiple scenes can be made at once. Simplified inspection flowcharts reduce setting errors and prevent from forgetting to change settings.

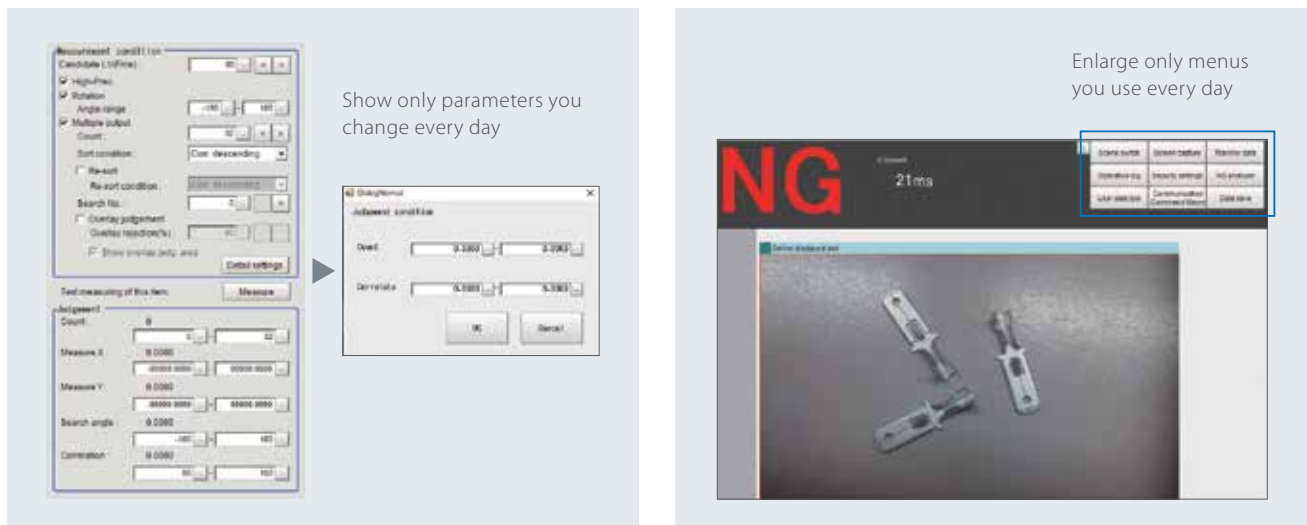
### Efficient setting

To inspect aligned parts, the FH Series can repeat the same measurements while shifting the measurement region within the same image. This reduces setting times.



## Customizable user interface simplifies operations at production sites

Showing only necessary screens for production makes the interface easier to use. Screen layout can be customized just by selecting and placing objects, without programming.



# Select the best combination for your application

Software assets can be shared between controllers. This allows you to install devices with the capabilities you need, anywhere you need them.

## Cameras

Choose the right camera to suit your required number of pixels. Easy-to-use cameras with built-in light are also available.

No. of pixels	High-speed camera	Standard camera	Rolling shutter camera	Camera with built-in light
20.4 Mpix <sup>1</sup>	--	--	FH-S□21R	--
12 Mpix	FH-S□X12	--	--	--
5 Mpix	FH-S□X05	FZ-S□5M3	FH-S□05R	--
2 Mpix	FH-S□02	FZ-S□2M	--	--
0.4 Mpix/ 0.3 Mpix	FH-S□X	FZ-S□	--	FZ-S□□□□□

1. 20.4 Mpix Cameras can be used with the FH-5x50/2050-series Controllers.

## Controllers

Select a controller based on the required processing speed and network.

	Series	CPU	Performance
High-speed, Large-capacity Controller	FH-5550 Series	Intel® Core™ i7 processor 4 cores	★★★★
High-speed Controller	FH-5050 Series	Intel® Core™ i7 processor 4 cores	★★★★
Standard Controller	FH-2050 Series	Intel® Celeron® processor 2 cores	★★★
Lite Controller	FH-L550 Series	Intel® Atom® processor 2 cores	★

★: The more stars, the higher the performance.



## Lights

Omron offers a complete line-up of lights required for image processing. The use of the camera-mount lighting controller allows you to control lighting conditions from the FH Controller, making system configuration simple.

### External lighting controller

Description	LED	High-brightness LED
Camera-mount Lighting Controller	FLV-TCC	FL-TCC
Bar Light	FLV-BR	FL-BR
Direct Ring Light	FLV-DR	FL-DR
Low Angle Ring Light	FLV-DL	--
Coaxial Light	FLV-CL	--
Shadowless Light	FLV-FR/FP/FS/FQ	--
Spot Light	FLV-EP	--
Direct Back/Edge Type Light	FLV-DB/FB	--
Dome Light	FLV-DD	--
Photometric Stereo Light <sup>1</sup>	--	FL-PS

1. The FL-TCC Camera-mount Lighting Controller cannot be used. Use the FLV-TCC1PS Lighting Controller for Photometric Stereo Light.

### Built-in lighting controller

Description	Model
MDMC Light	FLD-MD

Refer to the Vision Accessory Catalog (Cat. No. Q198) for details.

## Camera cables

The cable line-up includes bend-resistant cables and right-angle cables. Use the FZ-VSJ Cable Extension Unit for cable extensions.

Description	Model
Camera Cable	FZ-VS□ □□M
Right-angle Camera Cable	FZ-VSL□ □□M
Bend-resistant Camera Cable	FZ-VSB3 □□M
Bend-resistant Right-angle Camera Cable	FZ-VSLB3 □□M
Cable Extension Unit	FZ-VSJ

Performance	Memory	No. of connectable cameras	Fieldbus
★	RAM 32 GB, ROM 64 GB	8 max.	PROFINET, EtherNet/IP™, EtherCAT
★	RAM 8 GB, ROM 32 GB	8 max.	PROFINET, EtherNet/IP™, EtherCAT
	RAM 8 GB, ROM 32 GB	8 max.	PROFINET, EtherNet/IP™, EtherCAT
	RAM 4 GB, ROM 4 GB	4 max.	PROFINET, EtherNet/IP™

Optional product (sold separately)	Model
Scratch Detect AI Software Installer*	FH-UMAI1

\* This product can be installed on the FH-5□50-series Controller (version 6.40 or later).



EtherCAT

EtherNet/IP

PROFINET



### Touch panel monitor

The touch panel monitor is optimized for the operation of the FH Series.



Description	Model
Touch Panel Monitor 12.1 inches	FH-MT12
DVI-Analog Conversion Cable for Touch Panel Monitor	FH-VMDA □□
USB Cable for Touch Panel Monitor	FH-VUAB □□

RS-232C cables for long-distance connections are also available. Refer to Ordering Information for details.

### Sysmac Studio

The development environment for the Sysmac platform allows you to configure and simulate the FH Series on your PC.



Automation Software  
Sysmac Studio

Description	Model
DVD for installation	SYSMAC-SE200D
Software license (Vision Edition)	SYSMAC-VE001L

**OMRON AUTOMATION AMERICAS HEADQUARTERS** • Chicago, IL USA • 847.843.7900 • 800.556.6766 • automation.omron.com

**OMRON CANADA, INC. • HEAD OFFICE**

Toronto, ON, Canada • 416.286.6465 • 866.986.6766 • automation.omron.com

**OMRON ELECTRONICS DE MEXICO • HEAD OFFICE**

Ciudad de México • 52.55.5901.4300 • 01.800.386.6766 • mela@omron.com

**OMRON ELECTRONICS DE MEXICO • SALES OFFICE**

San Pedro Garza García, N.L. • 81.12.53.7392 • 01.800.386.6766 • mela@omron.com

**OMRON ELECTRONICS DE MEXICO • SALES OFFICE**

Eugenio Garza Sada, León, Gto • 01.800.386.6766 • mela@omron.com

**OMRON ELETRÔNICA DO BRASIL LTDA • HEAD OFFICE**

São Paulo, SP, Brasil • 55 11 5171-8920 • automation.omron.com

**OMRON ARGENTINA • SALES OFFICE**

Buenos Aires, Argentina • +54.11.4521.8630 • +54.11.4523.8483  
mela@omron.com

**OTHER OMRON LATIN AMERICA SALES**

+54.11.4521.8630 • +54.11.4523.8483 • mela@omron.com

*Authorized Distributor:*

**Controllers & I/O**

- Machine Automation Controllers (MAC) • Motion Controllers
- Programmable Logic Controllers (PLC) • Temperature Controllers • Remote I/O

**Robotics**

- Industrial Robots • Mobile Robots

**Operator Interfaces**

- Human Machine Interface (HMI)

**Motion & Drives**

- Machine Automation Controllers (MAC) • Motion Controllers • Servo Systems
- Frequency Inverters

**Vision, Measurement & Identification**

- Vision Sensors & Systems • Measurement Sensors • Auto Identification Systems

**Sensing**

- Photoelectric Sensors • Fiber-Optic Sensors • Proximity Sensors
- Rotary Encoders • Ultrasonic Sensors

**Safety**

- Safety Light Curtains • Safety Laser Scanners • Programmable Safety Systems
- Safety Mats and Edges • Safety Door Switches • Emergency Stop Devices
- Safety Switches & Operator Controls • Safety Monitoring/Force-guided Relays

**Control Components**

- Power Supplies • Timers • Counters • Programmable Relays
- Digital Panel Meters • Monitoring Products

**Switches & Relays**

- Limit Switches • Pushbutton Switches • Electromechanical Relays
- Solid State Relays

**Software**

- Programming & Configuration • Runtime